

W x D: 12.73m. x 17.57m.

LOWER LIVING 110.18

UPPER LIVING 68.26

GARAGE 38.03

PORCH 5.36

VERANDAH 3.21

BALCONY 4.91

TOTAL AREA 229.95m²

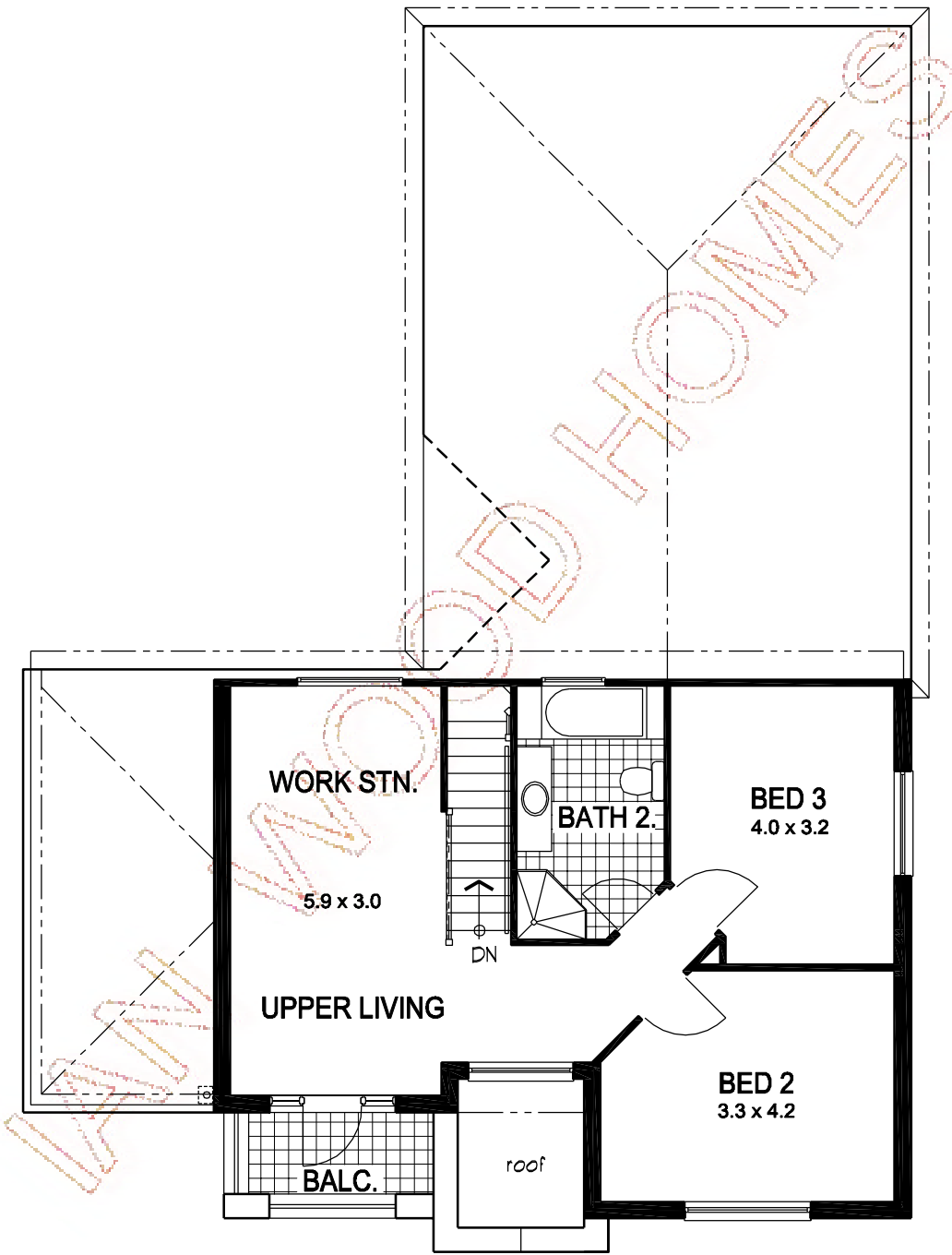


GROUND PLAN

SCALE 1:100

Ex-Display at Peninsular Drive, Mawson Lakes.

WEDGEWOOD MK1



W x D: 12.73m. x 17.57m.

- LOWER LIVING 110.18
- UPPER LIVING 68.26
- GARAGE 38.03
- PORCH 5.36
- VERANDAH 3.21
- BALCONY 4.91

TOTAL AREA 229.95m²



UPPER PLAN

SCALE 1:100

Ex-Display at Peninsular Drive, Mawson Lakes.

WEDGEWOOD MK1