

**LOWER PLAN**

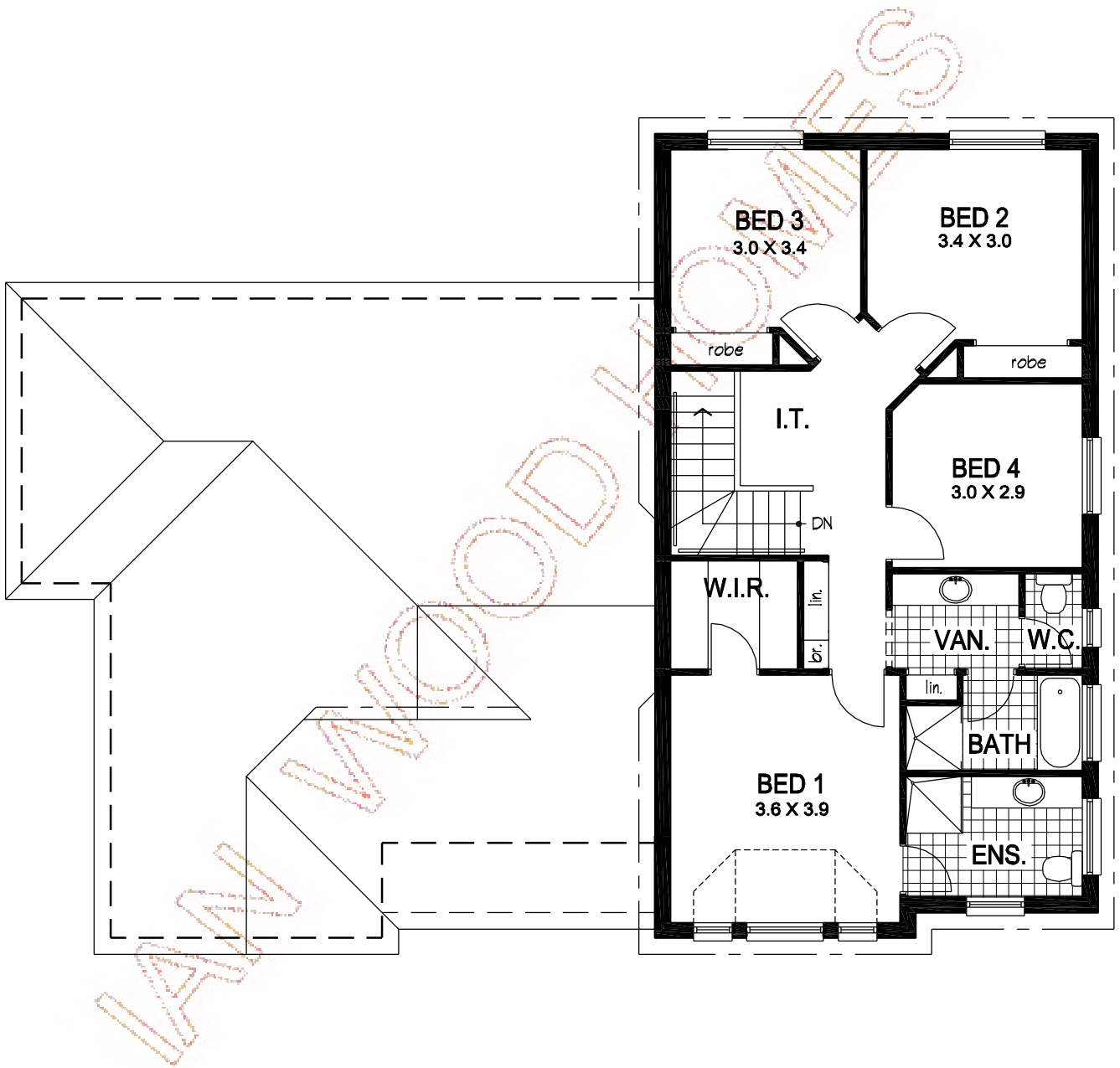
SCALE 1:100

Ex-Display at Mawson Lakes Blvd, Mawson Lakes.

**ELMWOOD MK5**

W x D: 16.99m. x 12.69m.

LOWER LIVING	133.07
UPPER LIVING	87.55
GARAGE	41.07
VERANDAH	4.75
<b>TOTAL AREA</b>	<b>266.44m<sup>2</sup></b>



**UPPER PLAN**

SCALE 1:100

Ex-Display at Mawson Lakes Blvd, Mawson Lakes.

**ELMWOOD MK5**

W x D: 16.99m. x 12.69m.

LOWER LIVING	133.07
UPPER LIVING	87.55
GARAGE	41.07
VERANDAH	4.75
<b>TOTAL AREA</b>	<b>266.44m<sup>2</sup></b>