

W x D: 17.59m. x 13.59m.

**GROUND PLAN**

SCALE 1:100

Ex-Display at Vickers Vimmy Pde, Northgate.

**TUDORWOOD MK21**

LOWER LIVING 141.05

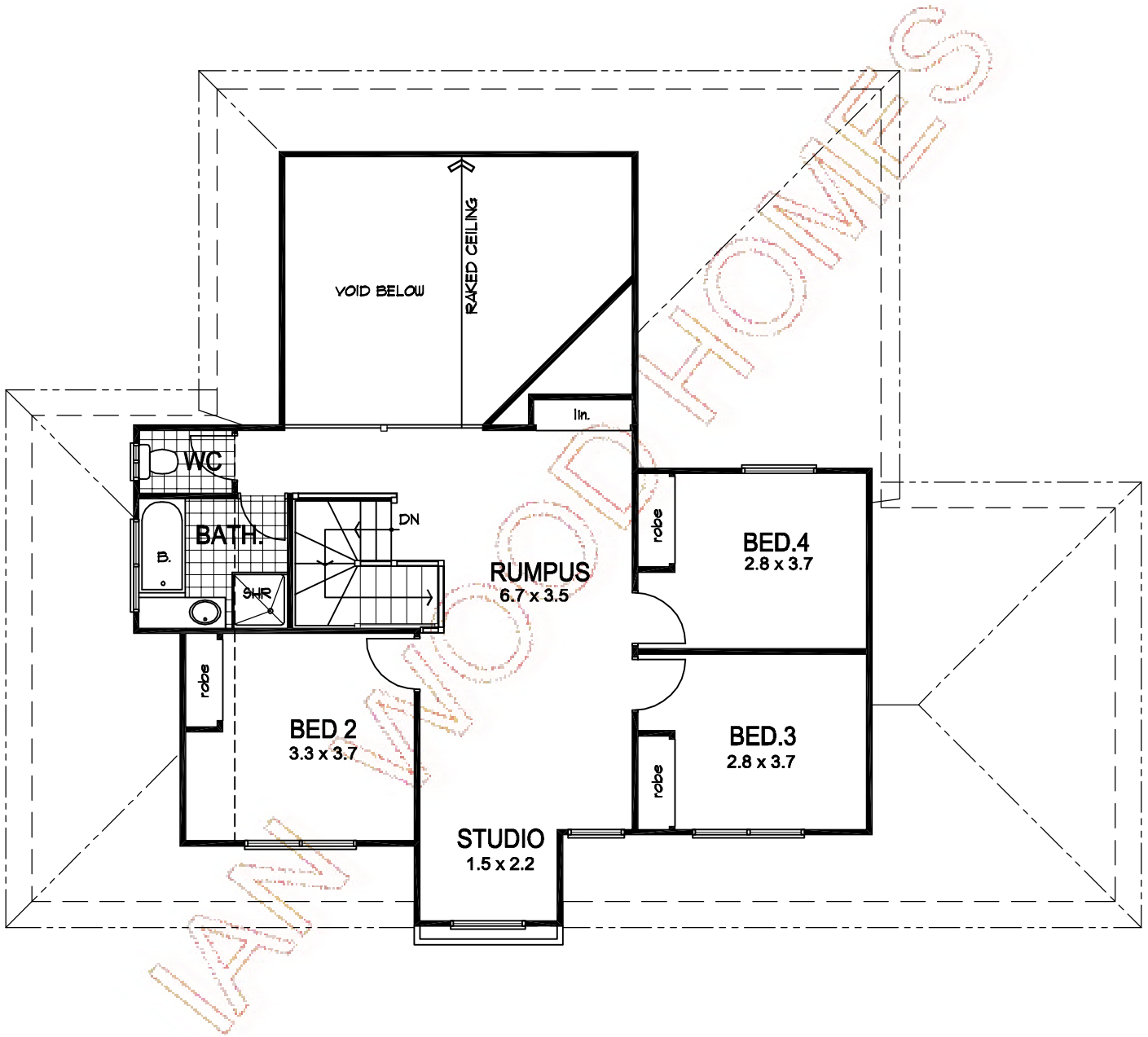
UPPER LIVING 78.96

VERANDAH 9.24

GARAGE 40.89

TOTAL AREA 270.14m<sup>2</sup>





**UPPER PLAN**

SCALE 1:100

Ex-Display at Vickers Vimmy Pde, Northgate.

**TUDORWOOD MK21**

W x D: 17.59m. x 13.59m.

LOWER LIVING 141.05

UPPER LIVING 78.96

VERANDAH 9.24

GARAGE 40.89

**TOTAL AREA 270.14m<sup>2</sup>**