

FLOOR PLAN

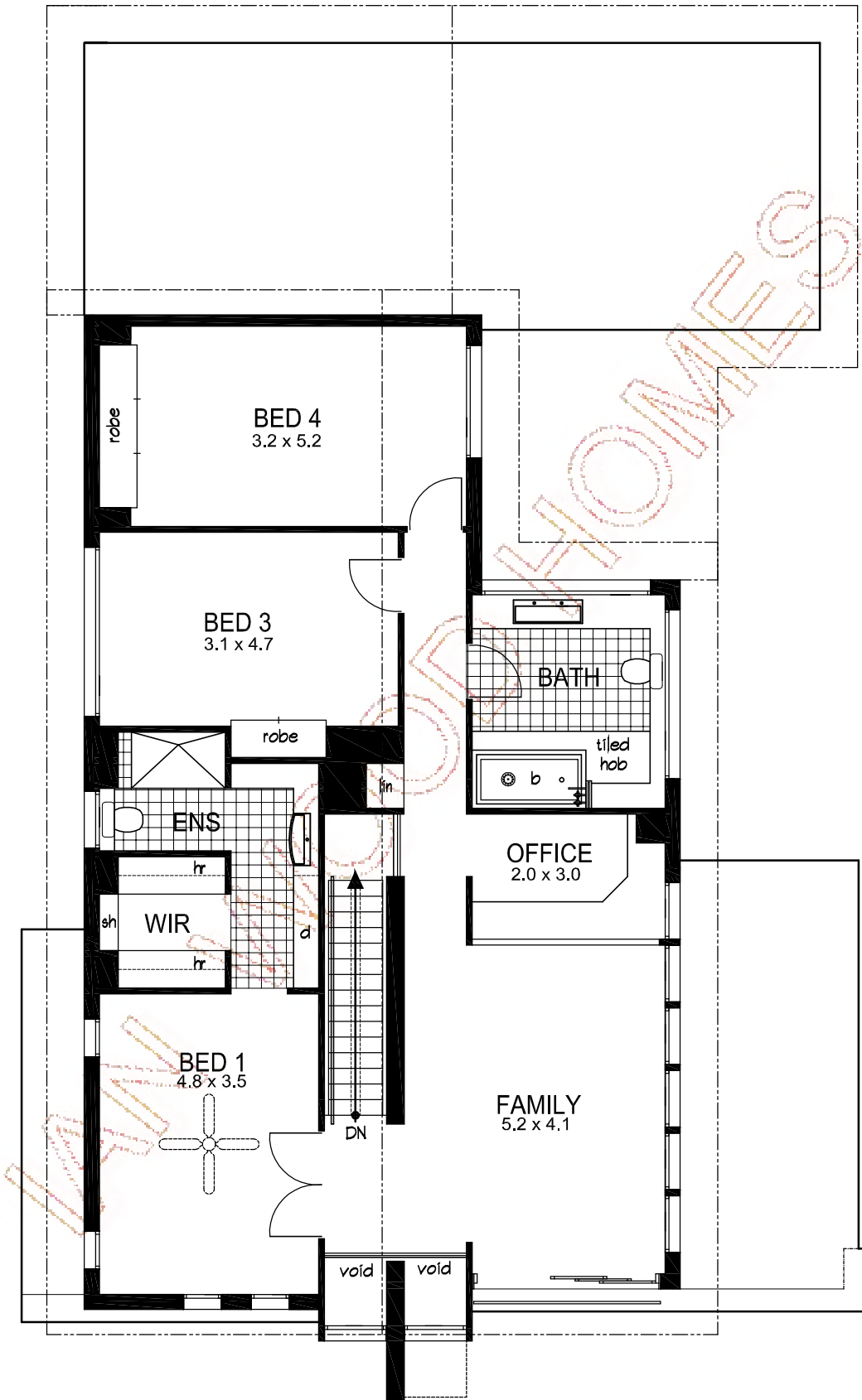
SCALE 1:100

On Display at Actil Ave, Woodville.

THE WOODVILLE

W x D: 13.36m. x 20.70m.

GROUND LIVING	174.8
UPPER LIVING	138.0
GARAGE	41.2
PORCH	1.0
TOTAL AREA	355.0m²



W x D: 13.36m. x 20.70m.



FLOOR PLAN

SCALE 1:100

On Display at Actil Ave, Woodville.

THE WOODVILLE

GROUND LIVING	174.8
UPPER LIVING	138.0
GARAGE	41.2
PORCH	1.0
TOTAL AREA	355.0m²



THE WOODVILLE

On Display at Actil Avenue, Woodville.

